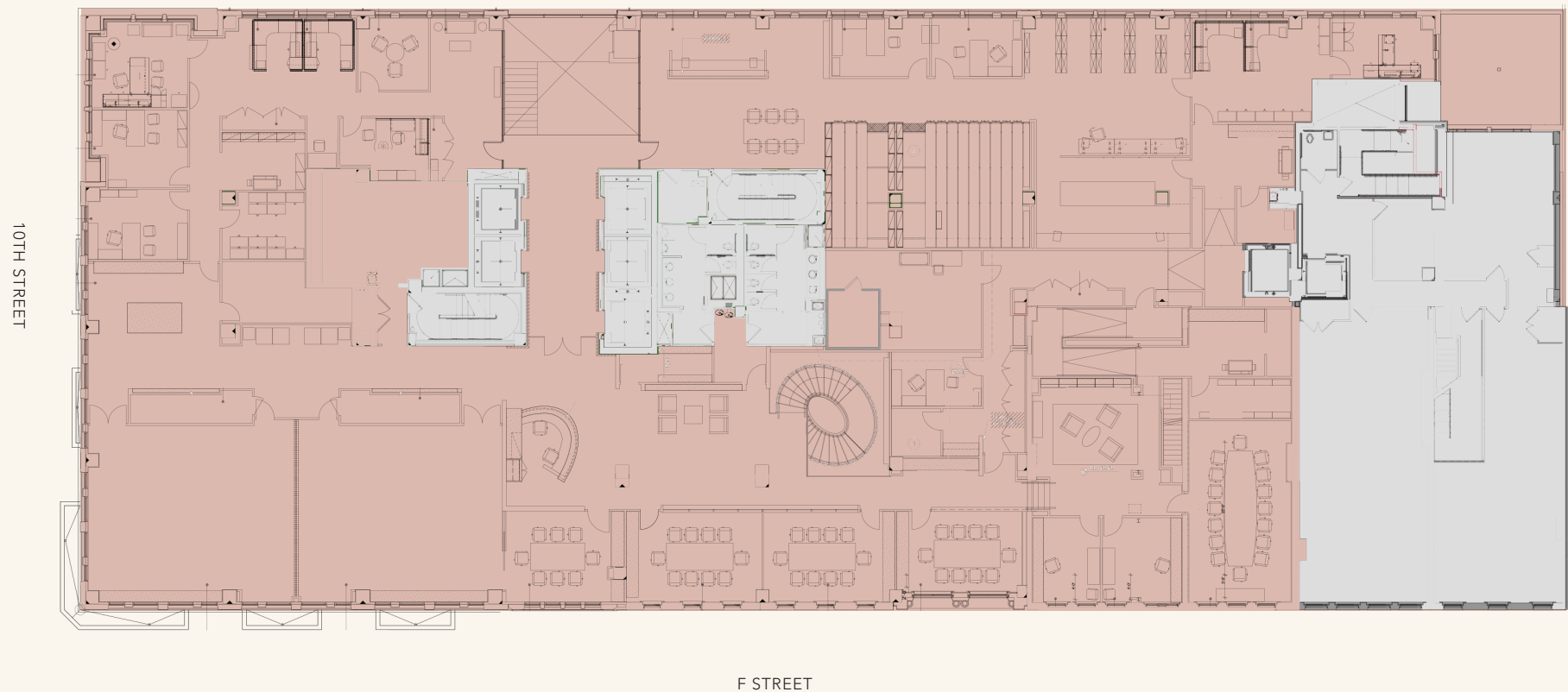


CARROLL SQUARE

SECOND FLOOR

Full Floor: 20,378 square feet, divisible | **Available:** September 1, 2020 | **Term:** 10 years

Can be stacked with retail level below for a combined larger presence with store front access.



CARROLL SQUARE | 975 F STREET, NW

Wil Pace | 202.624.8649 | wpace@Akridge.com

Mckay Elliott | 202.207.3932 | melliott@Akridge.com

AKRIDGE
Invested.